

# Advanced Environmental Instrumentation

Harnessing the Power of Mobile Computing



✓ Surveyed

✓ Documented

✓ Reported

## Cloud-based logging, remote access and control of any of GrayWolf's WiFi enabled probes, meters or monitors



Measurements are logged to the cloud on secure, reliable Microsoft Azure servers, at one minute intervals. Review data on smartphones, iPads, Droids, PCs or any web-enabled device. Attached notes (audio, text, photos, etc.) may also be reviewed. Data may be displayed as graphs, gauges, live readings and/or tables. Download logged readings via WiFi to GrayWolf's WolfSense® PC data transfer and reporting software. Or just export as a .CSV file to any device.

### Applications for GrayWolfLive include:

- **Indoor Air Quality (IAQ)**

Access instrument data from afar; whether viewing GrayWolf IAQ monitors/kits left for hours, days, weeks or permanently measuring key IAQ parameters, or even units that your test engineers are utilizing for walk-thru, spot check surveys. Logged readings and attached operator notes (audio, text, etc.) are all easy to get to.

- **Industrial Hygiene (IH)**

The enhanced, **GWLIVE-ALERTS** version of GrayWolfLive enables text messaging to your smart phone and email to any internet accessible devices when toxic gas levels or other measured parameters exceed your defined levels. The alert message may be e-mailed or text messaged to multiple e-mail addresses or phone numbers.

- **Heating Ventilation Air Conditioning (HVAC) & Facility Management (FM)**

Monitor differential pressure ( $\Delta P$ ) over time and receive alerts when negative pressure conditions occur, or when set points for air velocity/%RH/°C/°F/CO/NO<sub>2</sub>/NO/SO<sub>2</sub>/CO<sub>2</sub>/particulate (or other

parameters on GrayWolf instruments are exceeded in distant buildings or on another floor at your own location.

- **Green Buildings**

Remotely monitor relevant parameters for ongoing maintenance of LEED, ARC, WELL or other green guidelines/standards. Also, monitor GrayWolf systems deployed in buildings for pre-occupancy credits toward LEED/WELL and other certifications to determine when concentrations of TVOC, HCHO, CO, PM2.5, PM10, O<sub>3</sub> or other parameters fall within target values. Reports can be generated and any additional air sampling that is determined necessary may be initiated.

- **Ambient Air**

Leave GrayWolf meters outside for short-term tests and check them remotely when monitoring burn pits, process release plumes or other potential pollutant events. Also, access outdoor measurements in real-time to compare against indoor measured levels... **and many other applications.**

# GRAYWOLFLIVE®

Remote Access to GrayWolf Data Collection Meters



GRAYWOLF®  
SENSING SOLUTIONS  
Ph. 1-203-402-0477

Email:  
Salesteam@GrayWolfSensing.com

Website:  
www.GrayWolfSensing.com

# GRAYWOLFLIVE®

Remote Access to GrayWolf Data Collection Meters



✔ Measure Smart

✔ Report Efficiently

## Specifications

### Device Requirements:

Any web-enabled device may access GrayWolfLive through a standard browser (e.g. Chrome, Firefox, Safari). HTML 5 is required to playback Audio Notes.

### Download Software:

WolfSense PC 4.00 or better to import from GrayWolfLive direct (and utilize WolfSense PC and WolfSense ARG reporting capability). However, .CSV files may be exported to any device in lieu of being utilized with WolfSense PC software.

### Cloud Storage Memory:

Note that measurement data is synced to the Cloud for remote access, data sharing and (by utilizing Microsoft Azure servers) with reliable accessibility and security. Simultaneously, data can be logged on the field GrayWolf meter/platform for additional security and/or alternative log intervals. Meter memory will vary. Cloud storage: 1 year of live data, 1GB of data for photo notes/video and ample storage for data-points transferred from meters. Logged data can be exported or downloaded from the Cloud at any time for permanent storage on your local PC or other device.

### Bandwidth:

2-4 KB/min (plus extra for Notes, Audio and Photos)

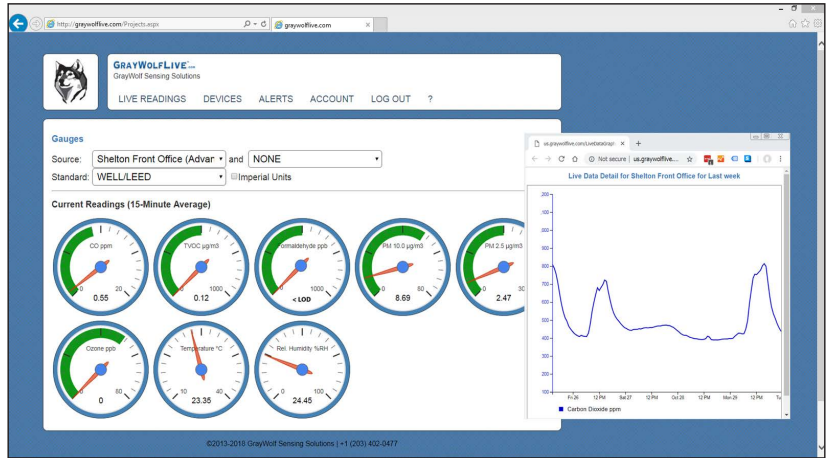
### Internet Access:

Each individual device communicating via WiFi requires a unique GrayWolfLive license. For example, an AdvancedSense® Pro meter interfaced to 2 x DirectSense® II probes and to a PC-3500 particle meter (as a system) requires a single license, while 2 x WiFi enabled DirectSense® II probes plus a WiFi enabled PC-3500 all communicating independently, would require 3 x GWLive licenses. An unlimited number of authorized users may access your (password protected) files simultaneously.

### Email/Text Alerts (GWLive-ALERTS version only):

Send to 10 e-mail addresses and/or 5 phone numbers maximum (in some countries, the number of texts per month is restricted; contact GrayWolf for details).

**SPECIFICATIONS ARE SUBJECT TO CHANGE WITHOUT FURTHER NOTICE**



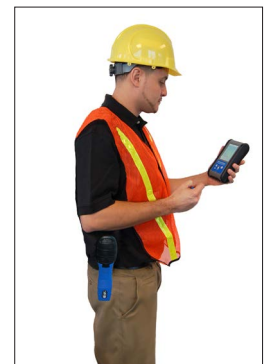
### ▲ GrayWolfLive Control Panel (shown here with WELL/LEED Application Specific Gauges)

The GWLive Control Panel automatically formats to fit the internet accessible device that you log in with (via your password protected account). Review info from GrayWolf instruments at one or multiple locations. Select **LIVE READINGS** to access the data that logs at 1 minute intervals to the Cloud. View all tabular readings or Summary Data (e.g. last 8 hours, last 24 hours, last year). Display single Y graphs, or select “Multi-Y Graphs” or select “View Gauges” where “General”, “WELL/LEED” or user defined Gauges can be set up to display. **DEVICES** allows you to perform various functions on remote GrayWolf instruments, and to access data/notes logged onto the devices. Export lets you send data to GrayWolf’s WolfSense PC software for cut and paste reporting or optional WolfSense ARG for auto-report generation. Alternatively, export the data as a .CSV file to any device. **ALERTS** (if this option has been purchased), allows high/low points to be assigned for text/email notification.



Remotely access ▲ units set up for continuous monitoring.

Access the full range of GrayWolf parameters via WiFi enabled AdvancedSense®, WolfPack®, WS-LAP PC or stand-alone Particulate meters. ▼



▲ Remotely access technicians’ portable test meter data.

**GRAYWOLF SENSING SOLUTIONS**  
 6 Research Drive (Worldwide Headquarters)  
 Shelton, CT 06484 USA  
 Ph. (1) 203-402-0477  
 800-218-7997



Email: [Salesteam@GrayWolfSensing.com](mailto:Salesteam@GrayWolfSensing.com)

[www.GrayWolfSensing.com](http://www.GrayWolfSensing.com)

**GRAYWOLF SENSING SOLUTIONS**  
 Annacotty Industrial Park, Unit 1C  
 Annacotty, County Limerick  
 Ireland V94 PR2Y  
 Ph. (353) 61358044