

Rental Program

Rent from the Manufacturer

with up-to-date **Factory Calibrations** and significant **Rebates** toward equipment purchase

1-800-218-7997

ADVANCED SENSE[®] IAQ
 Indoor Air Quality Instrument

AdvancedSense Indoor Air Quality Monitoring Kits

Weekly Rental Rate: **\$385** Monthly Rental Rate: **\$995**

INCLUDES:

IQ-410 IAQ Probe for Carbon Dioxide, Carbon Monoxide, Temperature and %RH measurement (also dewpoint, wetbulb temperature, specific humidity, absolute humidity, and humidity ratio)

AdvancedSense datalogger (with barometric pressure sensors installed)

WolfSense PC data download and analysis software

WolfSense ARG Advanced Report Generator makes comprehensive IAQ, LEED 3.2 and other environmental report generation easy and efficient.

PCC-AS01 case with belt clip and detachable neck strap

PCC-05IQ probe pouch with shoulder strap for hands-free, walk-through surveys

PCC-10 Hard-shell Security case for in-situ monitoring



AdvancedSense with IQ-610



PCC-10

IAQ PLUS Indoor Air Quality Monitoring Kits

Same kit as above but includes IQ-610 probe with ppb PID sensor for VOC measurement in place of IQ-410
 The IQ-610* also measures CO₂, CO, %RH, Temperature, Dewpoint (and other moisture measurements)

Weekly Rental Rate: **\$495** Monthly Rental Rate: **\$1,295**

OPTIONS

	WEEKLY	MONTHLY
TG-501* Gas Sensor Probe (not including gas sensors).....	\$200.....	\$475
NO2, SO2, NO, NH3, O2, H2S, CO or O3 sensor (each).....	\$145.....	\$200
Cl2, EtO or H2S/CO combo sensor (each).....	\$170.....	\$250
*One additional electrochemical gas sensor may be installed in the IQ-610 probe and up to 5 may be installed into the TG-501 probe. Specific sensor availability is limited, inquire regarding availability.		
WolfPack[®] Modular Area Monitor added (PCC-16 case sub'd).....	\$300.....	\$900
AS-202A Telescoping Hotwire Air Velocity Probe	\$125.....	\$340
PM-205-KIT Thermo Particle Concentration Meter	\$595.....	\$1650
w/AS interface cable, dual cyclones, soft-shell case		
PC-GW6A-KIT 6-channel Particle Counter displays counts and µg/m ³	\$425.....	\$1125
for 6 size ranges. Comes with AS interface cable, hardshell case		
PIT-504-KIT Extendable Pitot Tube kit w/2 spare PIT-504-EXT extensions.....	\$50.....	\$150
VentCal Software for Outdoor Air Ventilation Rate Calculations.....	\$25.....	\$70
AD-L7F-USB Camera/USB key download cable (AdvancedSense/WP).....	\$7.....	\$20
ACC-CAM-P1 Digital camera (AdvancedSense/WP) for	\$45.....	\$125
data file auto-attached photo/video notes		
CA-HD2** CO/CO ₂ /VOC/Gas Calibration hood.....	\$10.....	\$25
ACC-REG1 regulator & 2 cylinder hard-shell case	\$15.....	\$45

**No gases included; portable reference gas cylinders are available for sale, not rental.



AdvancedSense



PM-205
Particulate meter



PC-3016A
Particulate meter



FM-801
Formaldehyde meter



WolfPack
Area monitor



AS-202A
Airspeed probe

GRAYWOLF SENSING SOLUTIONS

Advanced Environmental Instrumentation

6 Research Dr., Shelton, CT 06484 USA • Tel: 1-203-402-0477 • Fax: 1-203-402-0478 • e-mail: Salesteam@GrayWolfSensing.com

www.GrayWolfSensing.com



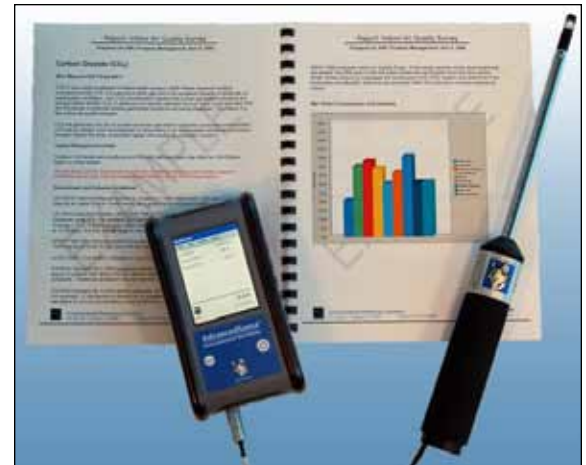
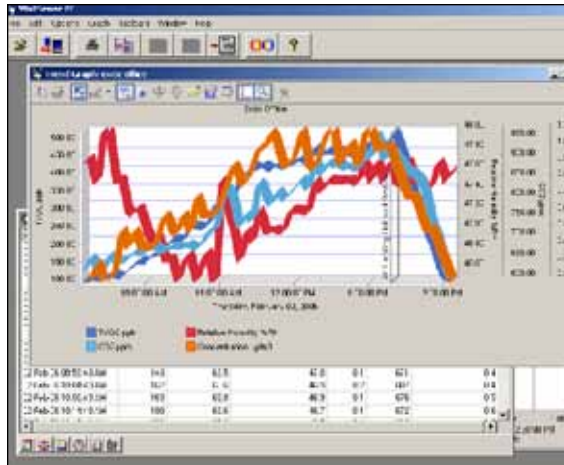
FM-801 FORMALDEHYDE Testing Kit

Includes AD-FM801-L7F cable for interface to AdvancedSense/WolfPack and beltclip/mini-tripod

Weekly Rental Rate: **\$150** Monthly Rental Rate: **\$375**

Formaldehyde sensor cartridge(s) must be *purchased* for use with rentals

- FM-ACC-C1** Single reusable sensor cartridge for use in FM-801\$165
- FM-ACC-C5** 5-pack reusable sensor cartridges for use in FM-801\$475
- FM-ACC-C10** 10-pack reusable sensor cartridges for use in FM-801\$775



WolfSense PC data transfer software

WolfSense ARG report

WolfSense PC software allows logged data to be down-loaded to your PC for review, graph generation, cut & paste reporting and/or simple export to Excel

WolfSense ARG Advanced Report Generator: Software makes comprehensive IAQ report generation easy and efficient.

A Template Design Wizard walks the user through report set-up:

- Define how to display measured data (CO₂, CO, %RH, Temperature, VOCs, etc).
- Select from a list of government and industry guidelines to include for each parameter.
- Choose from and edit canned text blocks with general IAQ background info.
- Automatically insert notes taken in the field on the mobile PC; text, drawings, photos.
- Create and insert graphs with comments, alarm/guideline lines.
- Add equipment descriptions/specs/photos, probe calibration info, company information/logos and much more.

REBATE UPON PURCHASE

Want to buy the equipment that you've rented? Purchase the kit that's been shipped to you and apply 75% of the rental price that you paid (up to a maximum of 75% of the total purchase price) toward the purchase price. In some cases, dependent on the condition of the equipment shipped to you, a "demo/rental equipment discount" may also be available.

Want to send the kit back and order a brand new unit? As long as you order within 6 months from the date that you return your rental kit you can apply 35% of the rental price that you paid...(up to a maximum of 50% of the total purchase price) toward your purchase.

Security Deposit: Rentals may require a (refundable) security deposit (covering the value of the rental equipment), if appropriate credit terms have not been previously established and maintained with GrayWolf. Allow 10 business days from the time that you supply adequate credit references for a new open account to be set up.

GrayWolf Sensing Solutions cannot guarantee the availability of rental equipment. The quoted rental pricing is exclusively available to clients in the USA and Canada, and is subject to change. Contact your local distributor for rental pricing and availability in other countries.

GRAYWOLF SENSING SOLUTIONS

Advanced Environmental Instrumentation

6 Research Dr., Shelton, CT 06484 USA • Tel: 1-203-402-0477 • Fax: 1-203-402-0478 • e-mail: Salesteam@GrayWolfSensing.com

www.GrayWolfSensing.com

