



May 2013

Rental Program

Rental Program

Rent from the Manufacturer
with up-to-date **Factory Calibrations** and significant
Rebates toward equipment purchase

1-800-218-7997

ADVANCED SENSE® HVAC

ΔP, %RH,
Airspeed+ Meter

ADVANCED SENSE® FM

Air Velocity,
Fumehood Meter

AdvancedSense HVAC Monitoring Kits
Weekly Rental Rate: **\$295** Monthly Rental Rate: **\$825**

INCLUDES:

- AdvancedSense** datalogger (with **BP-101** barometric pressure sensor installed)
- DP-702LH-A** auto-zeroing, auto-ranging differential pressure sensor (installed) w/2m dual tubing
- AS-201** telescoping hotwire anemometer probe (measures airspeed, temperature and volume airflow)
- RH-AS2** %RH, temperature direct connect probe (also dewpoint, wetbulb temperature, specific humidity, absolute humidity, and humidity ratio), and **PCC-RH-HDLA** handle
- WolfSense PC** data download, graphing and analysis software
- WolfSense ARG** Advanced Report Generator makes comprehensive IAQ, LEED 3.2 and other environmental report generation easy and efficient
- PCC-AS01** case with belt clip and detachable neck strap
- PCC-22AS** hard-shell carrying case (with extra room for small pitot tube and 2 x K thermocouple probes)

AdvancedSense FM Fumehood/Airspeed Measurement Kits

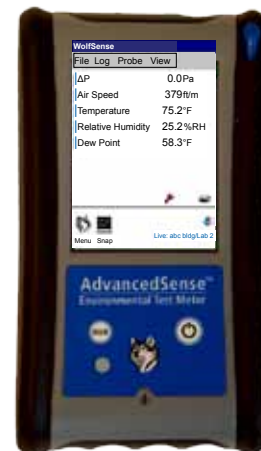
Weekly Rental Rate: **\$275** Monthly Rental Rate: **\$795**

INCLUDES:

- AS-201** telescoping hotwire anemometer probe
- AdvancedSense** datalogger (with differential and barometric pressure sensors installed and 2m dual tubing)
- WolfSense** Application software, includes basic volume flow (cfm, l/s) calculation
- WolfSense PC** data download, graphing and analysis software
- WolfSense ARG** Advanced Report Generator software
- HoodCal** software for fumehood face velocity measurement
- PCC-AS01** case with belt loop and detachable neck strap
- ACC-TPD-AS** tripod/extension mount fitting
- ACC-TAPEM1** tape measure
- PCC-22AS** hard-shell case

OPTIONS

	WEEKLY	MONTHLY
Substitute AS-202A articulating and telescoping airspeed probe for AS-201 (additional amount)	\$15.....	\$45
PC-GW6A-KIT 6-channel particle counter displays counts and μg/m ³ for 6 size ranges; comes with AS interface cable, hardshell case	\$425.....	\$1125
PM-205-KIT Thermo pDR-1500 particle concentration meter with AdvancedSense interface cable, dual cyclones, soft-shell case	\$595.....	\$1650
PIT-504-KIT extendable pitot tube kit w/2 spare PIT-504-EXT extensions	\$50.....	\$150
HoodCal Software for fumehood face velocity measurement.....	\$25.....	\$70
DuctCal Software for duct traverse volume airflow calculations.....	\$20.....	\$50



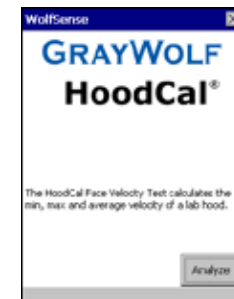
AdvancedSense datalogger



PC-3016A particle counter



PIT-504 pitot tube kit



HoodCal fumehood face velocity software

GRAYWOLF SENSING SOLUTIONS

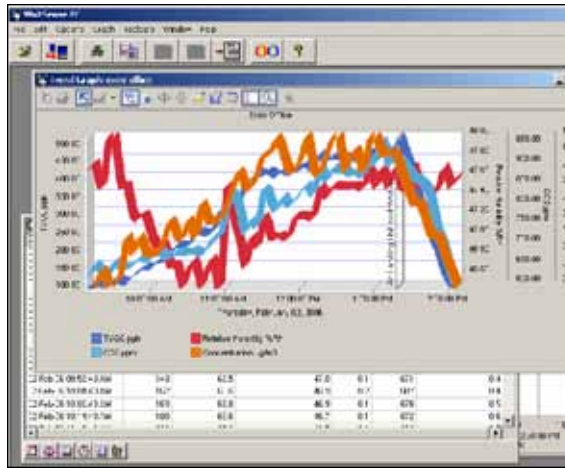
Advanced Environmental Instrumentation

6 Research Dr., Shelton, CT 06484 USA • Tel: 1-203-402-0477 • Fax: 1-203-402-0478 • e-mail: Salesteam@GrayWolfSensing.com

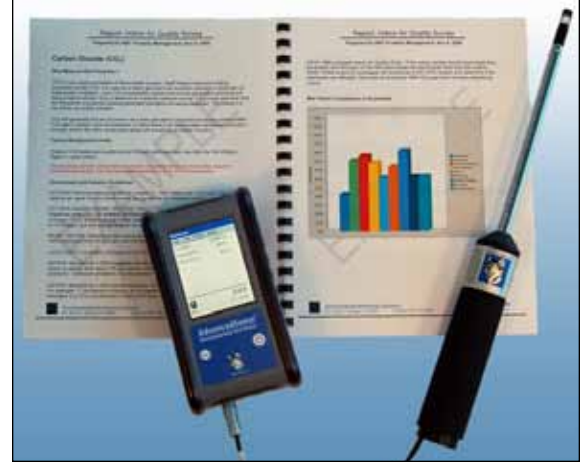
www.GrayWolfSensing.com



AS-201 telescoping hotwire anemometer



WolfSense PC data transfer software



WolfSense ARG report

WolfSense PC software allows logged data to be down-loaded to your PC for review, graph generation, cut & paste reporting and/or simple export to Excel

WolfSense ARG Advanced Report Generator

A Template Design Wizard walks the user through report set-up:

- Define how to display measured data (Toxic gases, %RH, Temperature, VOCs, etc).
- Select from a list of government and industry guidelines to include for each parameter.
- Choose from and edit canned text blocks with general IAQ background info.
- Automatically insert notes taken in the field on the AdvancedSense; text, drawings, photos.
- Create and insert graphs with comments, alarm/guideline lines.
- Add equipment descriptions/specs/photos, probe calibration info, company information/logos and much more

REBATE UPON PURCHASE

Want to buy the equipment that you've rented? Purchase the kit that's been shipped to you and apply 75% of the rental price that you paid (up to a maximum of 75% of the total purchase price) toward the purchase price. In some cases, dependent on the condition of the equipment shipped to you, a "demo/rental equipment discount" may also be available.

Want to send the kit back and order a brand new unit? As long as you order within 6 months from the date that you return your rental kit you can apply 35% of the rental price that you paid...(up to a maximum of 50% of the total purchase price) toward your purchase.

Security Deposit: Rentals may require a (refundable) security deposit (covering the value of the rental equipment), if appropriate credit terms have not been previously established and maintained with GrayWolf. Allow 10 business days from the time that you supply adequate credit references for a new open account to be set up.

GrayWolf Sensing Solutions cannot guarantee the availability of rental equipment. The quoted rental pricing is exclusively available to clients in the USA and Canada, and is subject to change. Contact your local distributor for rental pricing and availability in other countries.



AS-202A articulating/telescoping thermal anemometer

GRAYWOLF SENSING SOLUTIONS

Advanced Environmental Instrumentation

6 Research Dr., Shelton, CT 06484 USA • Tel: 1-203-402-0477 • Fax: 1-203-402-0478 • e-mail: Salesteam@GrayWolfSensing.com

www.GrayWolfSensing.com