



✓ Surveyed

✓ Documented

✓ Reported

Features:

- View / Log 6 Particle Sizes Simultaneously
- 0.3 to 0.5µm, 0.5 to 1.0µm, 1.0 to 2.5µm, 2.5 to 5.0µm, 5.0 to 10.0µm, 10+ µm
- View / Log as differential or cumulative
- Alternatively display µg/m³ in Concentration Mode including approximate PM2.5, PM10, TSP
- 0.1 CFM (2.8 LPM) Flow Rate
- Color Touch Screen Interface
- Removable / Rechargeable Li-Ion Battery
- Optional Temperature / Relative Humidity Probe
- Internal Audible Alarm
- 2-Year Warranty
- Belt clip for walk-thru surveys or attachment to Tripods or to GrayWolf Area Monitors
- On-board Memory (stores 3,000 samples)
- Supplied with GrayWolf's WolfSense® PC Software for data download and analysis
- Optional WolfSense ARG Automated Report Generation Software
- Use as a stand-alone or interface to GrayWolf's AdvancedSense®, DirectSense® and WolfPack® for Enhanced Logging and Expanded Features



Benefits:

- Easy to Use (User-Friendly Interface)
- Expands your GrayWolf AdvancedSense, DirectSense and WolfPack parameters
- Low Cost of Ownership
- **Efficiently Combines Particle Counting and Mass Concentration read-out in one Meter**

Use the PC-3016A as a stand-alone particle counter, plug it into a mobile computer or into a sophisticated WolfPack/AdvancedSense system for simultaneous connection with GrayWolf's DirectSense probes.

- Ergonomically designed and lightweight, the PC-3016A is the most advanced handheld particle counter on the market.
- Easily download data from the PC-3016A using the included WolfSense PC Software to create high quality trend/bar graphs/tables, use WolfSense's advanced organizational features or simply export to Microsoft Excel®.
- Offering 6 channels of simultaneous particle counting, the PC-3016A displays both cumulative and differential particle count data on its easy-to-read 3.5" (8.9 cm) color touch screen.
- Alternate displayed/logged readings from particle counts to approximate mass concentration (µg/m³).
- Optionally add Advanced Report Generator software for extremely efficient, automated reporting of particle count/concentration data.
- Monitor particulate levels, even in those "hard-to-reach" areas where two-handed operation is unsafe.



PC-3016A

6-Channel Particle Counter



GRAYWOLF®
SENSING SOLUTIONS
 PH. 1-203-402-0477
 FAX: 1-203-402-0478

EMAIL:
 SALESTEAM@GRAYWOLFSENSING.COM

WEBSITE:
 WWW.GRAYWOLFSENSING.COM



PC-3016A

6-channel Particle Counter

Specifications: PC-3016A

- Size Range:** 0.3 - 10.0 µm+ (145 µm max into inlet)
- Channel Sizes:** 0.3, 0.5, 1.0, 2.5, 5.0, 10.0 µm
- Optional: inquire about other size cuts (Particle Count only)
- Flow Rate:** 0.1 CFM (2.83 LPM)
- Counting Efficiency:** 50% @ 0.3 µm; 100% for Particles >0.45 µm (per ISO 21501-4)
- Laser Source:** Extreme Life Laser Diode with >20 Years MTTF
- Zero Count Level:** <1 Count / 5 minutes (per ISO 21501-4)
- Concentration Limits:** 4,000,000 Particles / ft³ @ 5% Coincidence Loss
- Calibration:** Meets ISO 21501-4 Calibration using NIST Traceable PSL Spheres, DMA and Condensation Particle Counter
- Count Modes:** Automatic, Manual, Beep, Concentration, Cumulative/Differential, Mass Concentration
- Data Storage (on-board):** 3,000 Sample Records, Rotating Buffer (includes particle and environmental data, plus alphanumeric location and time)
- Communication Modes:** RS232 converted to USB (via included RJ-45 to USB cable) for PCs or Printers. RS232 to AdvancedSense, WolfPack or PPC w/GrayWolf cable/software.
- Touch Screen Display:** 3.5" (8.89cm, Color TFT)
- Alarms:** Internal Alarm Buzzer. Alarms on Counts, Low Battery, Sensor Failure
- Sample Inlet:** Isokinetic Sampling Probe
- Sample Output:** Internally Filtered to HEPA Standards (>99.97% @ 0.3µm)
- Vacuum Source:** Internal Pump, Automatic Flow Control
- Enclosure:** High Impact Injection Molded Plastic (with handle)
- Power:** External 100-240V, 50-60Hz Power Supply (12VDC, 1.25A)
- Battery:** Li-Ion, Removable & Rechargeable
- Dimensions:** 8.75" x 5.0" x 2.5" (22.23 x 12.7 x 6.35 cm)
- Weight:** 2.2lb (1kg)
- Languages:** English (U.S.), Deutsch, Español, Français, Italiano

Environmental Conditions:

- Operating: 50°F to 104°F (10°C to 40°C) / 20% RH to 95% RH non-condensing
- Storage: 14°F to 122°F (-10°C to 50°C) / Up to 98% RH non-condensing

Accessories Included:

- Operating manual on CD, Removable battery, Isokinetic Sample Probe (direct mount), Purge (zeroing) Filter, 100/240V AC charger/adaptor, Belt Clip, WolfSense PC Data Analysis Software.

Options:

- PC-GW6AAS-KIT** also includes hardshell carrying case, interface cable for interface to AdvancedSense (specify **PC-GW6AWP-KIT** for WolfPack).
- PC-GW6-RHCF** Temperature/Relative Humidity Probe 32-122°F (0-50°C), ± 1°F (0.5°C), 15-90% ± 2% RH
- WolfSense ARG** Advanced Reporting Software
- PCC-GW6** Hardshell case. Dimensions: 38.1cm x 33.0cm x 17.8cm (15" x 13" x 7")
- AD-3016-L7** Cable for interfacing PC-3016A to AdvancedSense Meter
- AD-3016-L6P** Cable for interfacing PC-3016A to WolfPack (includes power socket for powering PC-3016A from the WolfPack)
- WS-LAP** WolfSense application for WIN XP/7/8 Tablet/Laptop PC (interface via included USB cable)

GrayWolf Sensing Solutions reserves the right to change specifications without notice.

MEASURE SMART

REPORT EFFICIENTLY



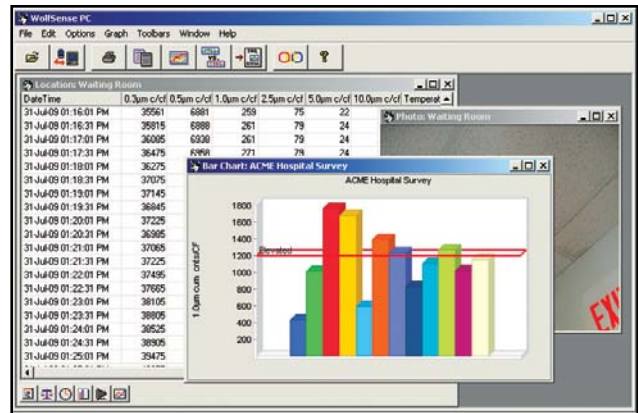
Optional PC-GW6-RHCF %RH, °F/°C probe (removable)



PCC-GW6 Hard-Shell Case

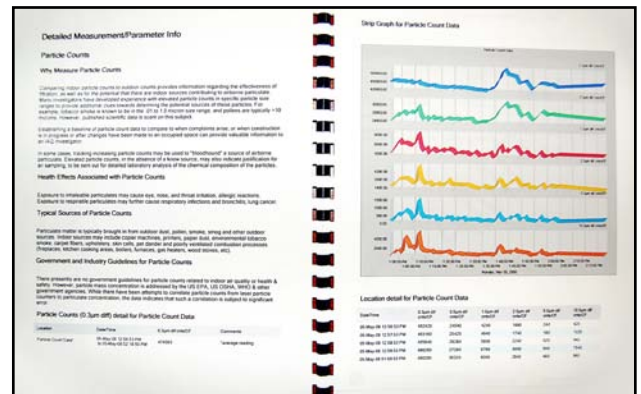


Example AdvancedSense Screen (interface enables GrayWolf's powerful in-situ features for particulate data, optional remote WiFi access)



Example WolfSense PC Screen data transfer & analysis software (supplied as standard)

Example WolfSense ARG report (optional automated report generation software)



GRAYWOLF SENSING SOLUTIONS
 6 RESEARCH DRIVE (WORLDWIDE HEADQUARTERS)
 SHELTON, CT 06484 USA
 PH. (1)203-402-0477
 800-218-7997
 FAX: (1)203-402-0478



EMAIL: SALESTEAM@GRAYWOLFSENSING.COM

WWW.GRAYWOLFSENSING.COM

GRAYWOLF SENSING SOLUTIONS
 ANNACOTTY INDUSTRIAL PARK, UNIT 1C
 ANNACOTTY, COUNTY LIMERICK
 IRELAND
 PH. (353) 61358044
 FAX: (353) 61358160